

PANTHEON ARMS



WEDGE-LOCK HANDGUARD INSTALLATION INSTRUCTIONS

These are supplemental instructions for the wedge-lock handguard in addition to the Dolos/Prometheus instructions. Use these in place of the handguard installation section on the Dolos/Prometheus instructions.

What's in the box:



Tools needed:

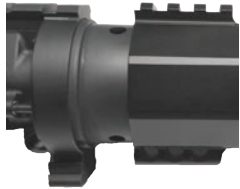
- 5/64" Allen wrench or driver

WARNING

Ensure that your firearm is unloaded and the chamber is clear prior to installation. Failure to do so could result in damage to property, injury and/or death.

Attach your barrel to the upper

You will need the parts from your barrel install. Insert the gas tube through the port on the tri-lug (B) and continue with inserting the barrel extension into the upper. Push the lock collar (A) into the tri-lug (B), use the line on the lock collar to align its notches with the tri-lug by positioning it at 12 o' clock. Rotate the lock collar (A) clockwise until the ratchet-ing stops and the barrel is pulled into the tri-lug. You will want to use a firm, continuous twist to engage the lock collar to the tri-lug. Check to ensure the barrel is secure. If you find there is movement in the barrel, then the lock collar is likely not tight enough. Pull the



Now you need the wedge-locks, three screws, and your handguard. Separate the head and tail pieces of the wedge-lock hardware. Slide the handguard over the barrel assembly with the wedge-lock end first. Turn the upper over so the rail on your receiver and handguard are aligned by placing the rail sections on a flat surface.

Select one of the wedge-lock head pieces (large hole) and one of the screws. Insert the wedge-lock head piece into one of the holes at the bottom of the handguard with the angled flat facing the barrel. Place a small dab of medium-strength threadlocker (Loctite 242 or similar) near the end of the screw threads.

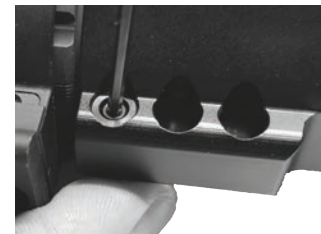


Angled Flat



Insert a wedge-lock tail piece into the opposite side of the same hole and use your finger to hold it in place. Insert a screw into the head piece.

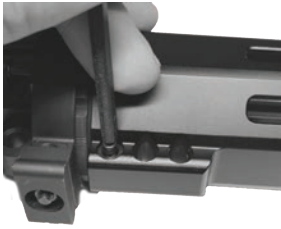
Use an Allen wrench on the screw to and begin turning the screw clockwise with your Allen wrench to engage the threads on the tail piece. Once you have engaged the threads, tighten the screw. Be careful not to strip the screw head, and 6 in-lbs of torque is all that is needed. Repeat with the other two sets of wedge-locks.



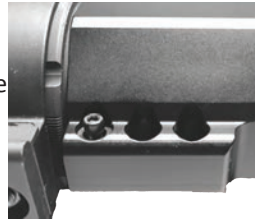
You're all set. Let us know if you have any questions by sending an email to sales@pantheonarms.com or by phone, 269.845.1941.

Removing the wedge-locks

To remove the wedge locks, loosen the screws until the socket head protrudes to the point you can place a punch, dowel, or similar object on the head (roughly 1/8"), but do not remove them completely.



Place your punch on the head and tap with a mallet until the head falls back into the wedge-lock and continue by removing the screw with your Allen wrench.



Once the tail piece of the wedge lock is free, turn the handguard over and insert your punch into the wedge-lock hole. Tap the punch until the head piece falls free. Repeat with the other two wedge-locks.

